

## Ice Makers

### Granular Ice XS, 94kg/24h, 20kg bin, air-cooled

ITEM # \_\_\_\_\_

MODEL # \_\_\_\_\_

NAME # \_\_\_\_\_

SIS # \_\_\_\_\_

AIA # \_\_\_\_\_


**730287 (IGE94I20SNP)**

 Ice Maker, Granular Ice XS,  
 94 kg/24h, self-contained,  
 20kg ice collection bin  
 included, air-cooled

### Short Form Specification

#### Item No. \_\_\_\_\_

Air cooled granular ice XS maker, self-contained with 20kg bin. Height adjustable feet. AISI 304 stainless steel exterior, food grade and internal ice container in ABS, AISI 316 evaporator ensure safe contact with ice. Fully automatic in operation and easy cleanability thanks to the automatic cleaning system. The ice making method guarantees continuous and reliable production. Electronic board controls the set parameters and sensitive touch-press panel with 2 speed regulation of ice production. Bin with internal corner for easy cleaning and it is fully insulated. Supplied with flexible water supply, drain hoses and scoop. Hydrocarbon refrigerant gas R290 for the lowest environmental impact.

### Main Features

- Easy cleanability guaranteed by an automatic system: the cleaning switch activate the circulation and the rinse of water; at the end of the cycle just swithed again to start producing ice.
- The ice making method guarantees a continuous and reliable production.
- The ice-making method (crushing system) guarantees compact, hygienically pure crushed ice that is resistant to melting.
- Water consumption and productivity calculated using 15°C water temperature and 21°C ambient temperature.
- Fully automatic in operation.
- Rounded internal corners of the bin assure ease of cleaning.
- Food grade ABS interior.
- Suitable for gravity drain only.
- Bin included.
- Compliant to CE requirements for safety.

### Construction

- Reliability guaranteed by the quality of the construction materials used (front, top and sides in 304 AISI stainless steel) and the sophisticated product and process technology involved.
- AISI 304 stainless steel exterior.
- AISI 316 evaporator ensures a safe contact with ice.
- Sturdy door opening system made in AISI 304 stainless steel.
- Internal ice containers in ABS.
- Supplied with flexible water supply, drain hoses and scoop.
- ON-OFF rocker switch.
- Adjustable 105-155mm feet.
- Plug as standard (schuko type).

### Sustainability



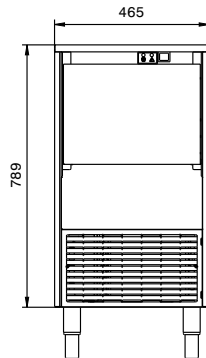
- Hydrocarbon refrigerant gas R290 for the lowest environmental impact (GWP=3) - CFC and HCFC free.
- Reduced energy consumption by fully insulated storage bin.

### Optional Accessories

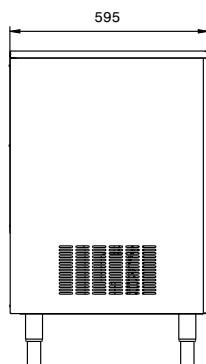
- Purity C 150 Quell ST system with PNC 0S1628 ☐ flow meter
- Purity C 300 Quell ST system with PNC 0S1629 ☐ flow meter
- Drain pump kit PNC 880690 ☐
- Kit of 4 small black feet, 13mm (0/+22mm) PNC 880692 ☐

APPROVAL: \_\_\_\_\_

Front

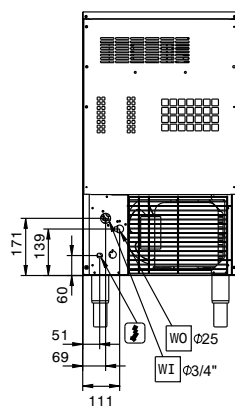


Side

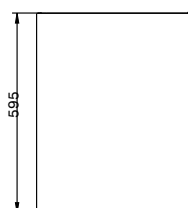


CWI1 = Cold Water inlet 1 (cleaning)  
 D = Drain  
 EI = Electrical inlet (power)

Rear side



Top



### Electric

Supply voltage: 220-240 V/1N ph/50 Hz  
 Electrical power, max: 0.55 kW

### Capacity:

Bin capacity: 20 kg

### Key Information:

External dimensions, Width: 465 mm  
 External dimensions, Depth: 595 mm  
 External dimensions, Height: 889 mm  
 Net weight: 58 kg  
 Output: 94 kg/day

### Sustainability

Refrigerant type: R290  
 Refrigerant weight (unit 1): 110 g  
 Water consumption: 3.9 lt/hr